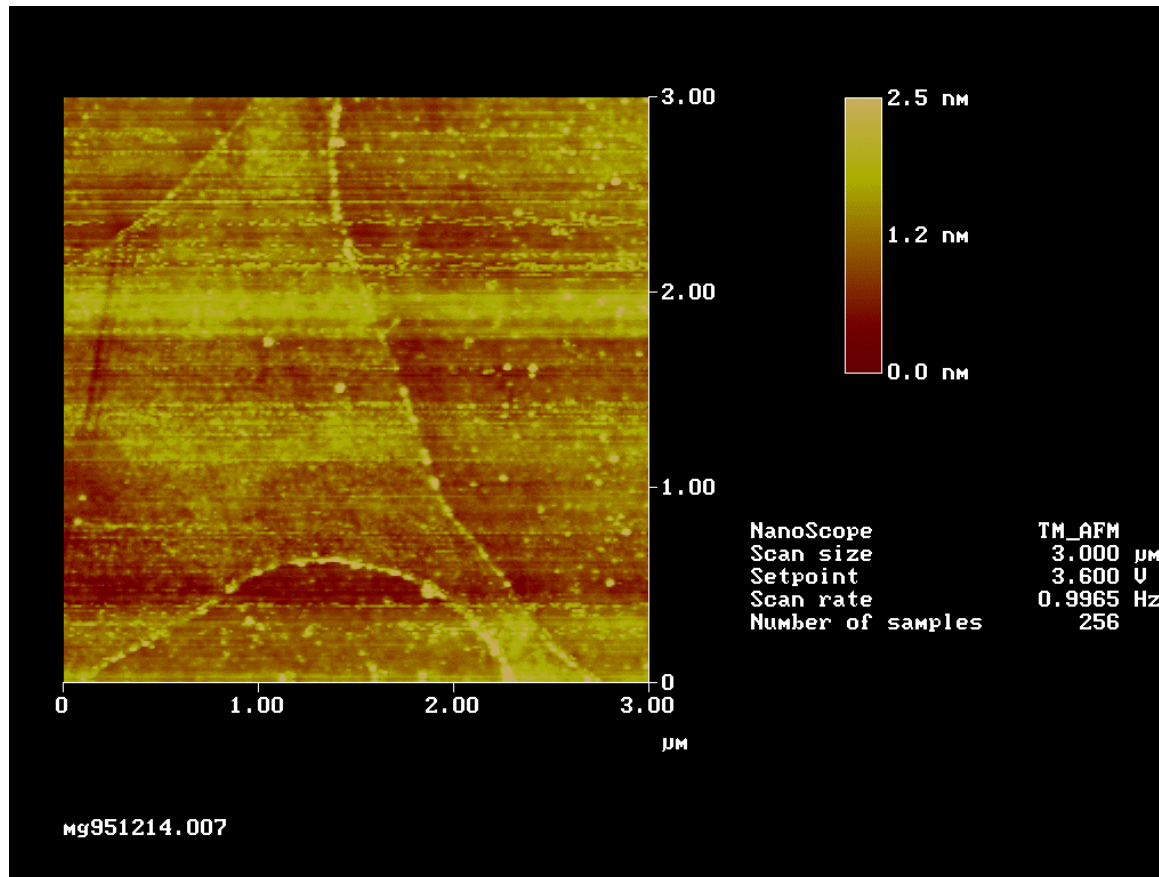
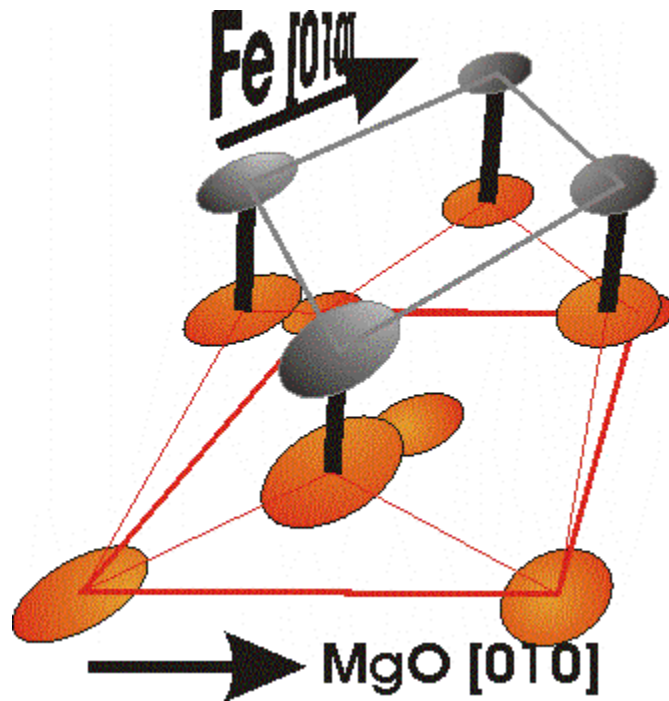


Epitaxial Fe/Cr superlattices on MgO(001)



Epitaxial Fe/Cr superlattices
on MgO(001)

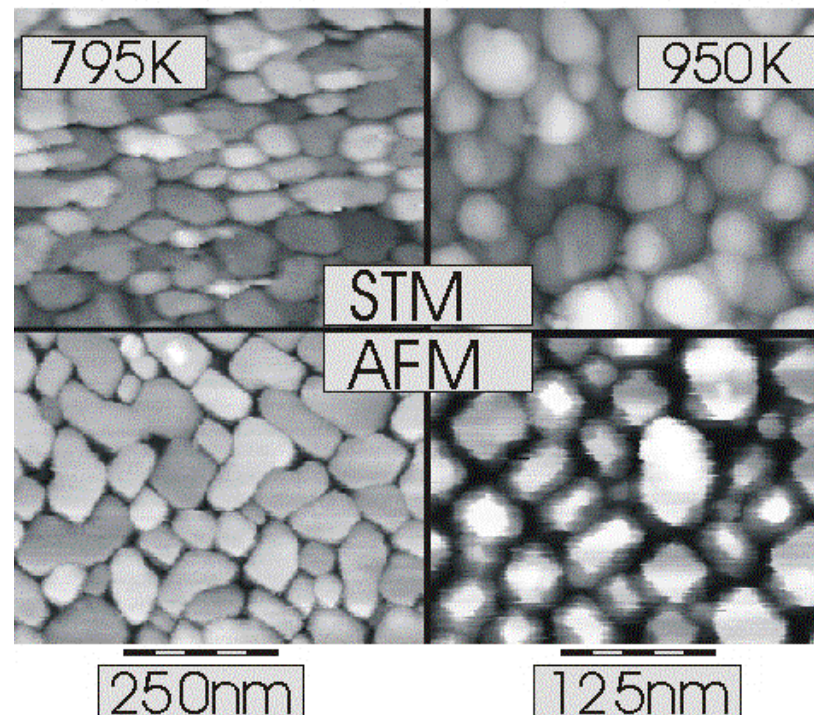
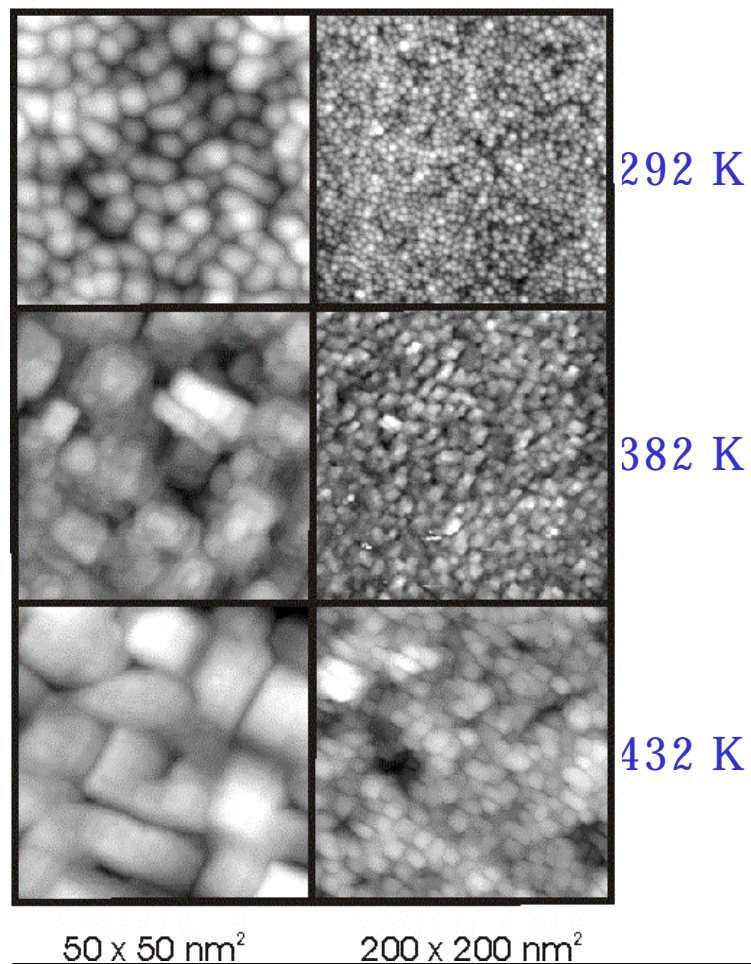


-

Epitaxial Fe layers on MgO(001)

AFM

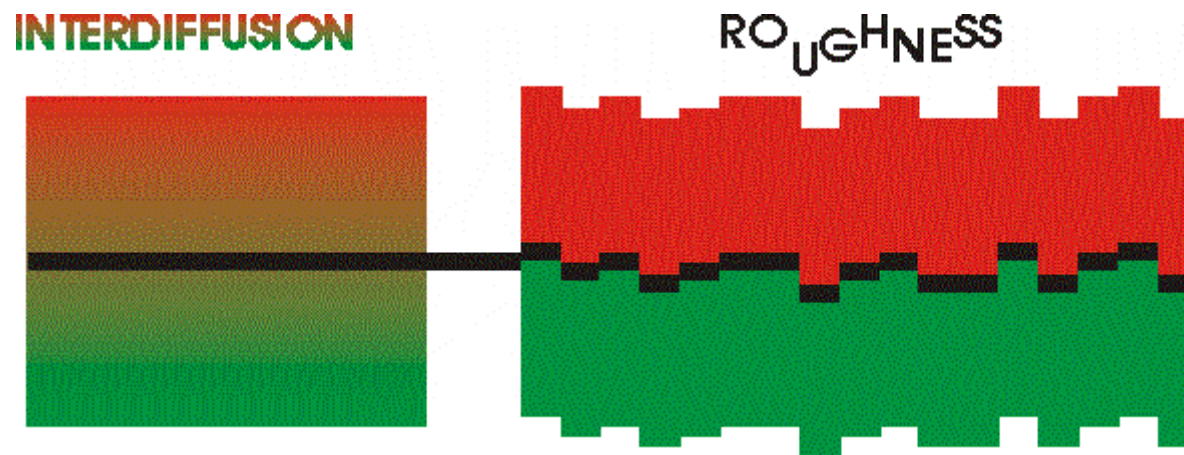
20Å Fe on MgO(001)



S.M. Jordan, J.F. Lawler, R. Schad, H. van Kempen
J. Appl. Phys. 84, 1499 (1998)

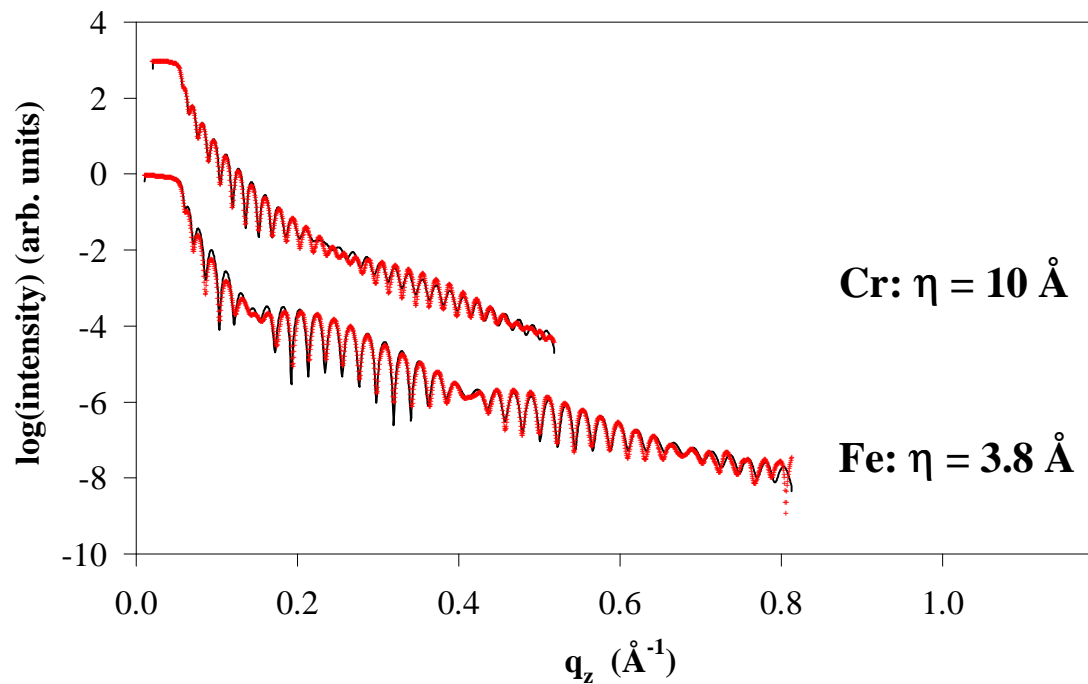
S.M. Jordan, R. Schad, A.M. Keen, M. Bischoff, D.S. Schmool, H. van Kempen
Phys. Rev. B 59, 7350 (1999)

INTERFACE ROUGHNESS



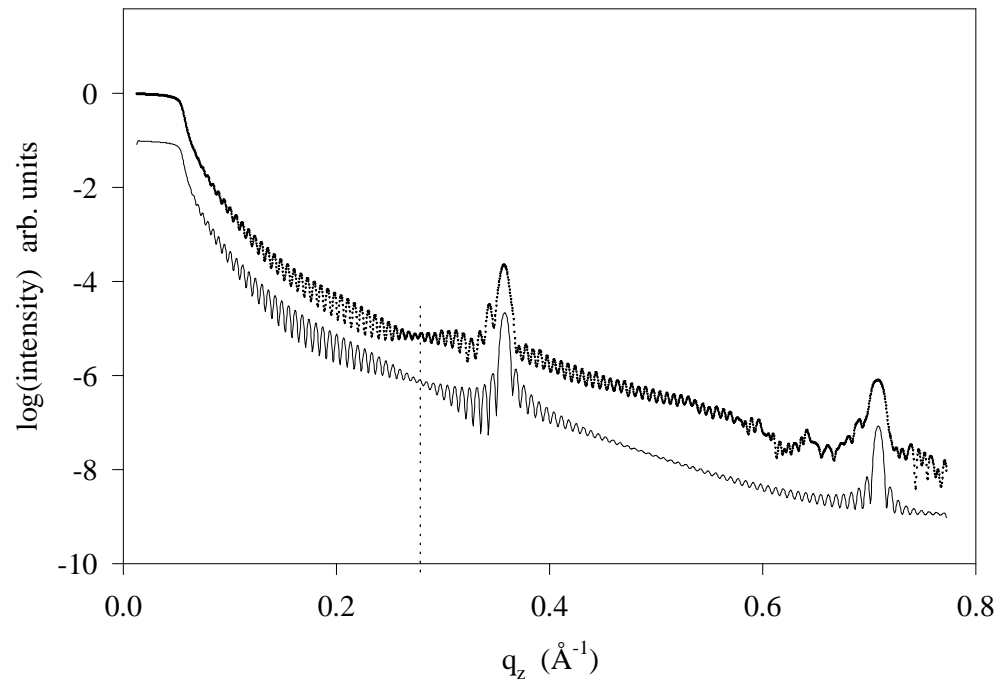
can be described by its amplitude and the lateral length scale

- Epitaxial Fe and Cr single layers on MgO(001)
XRD

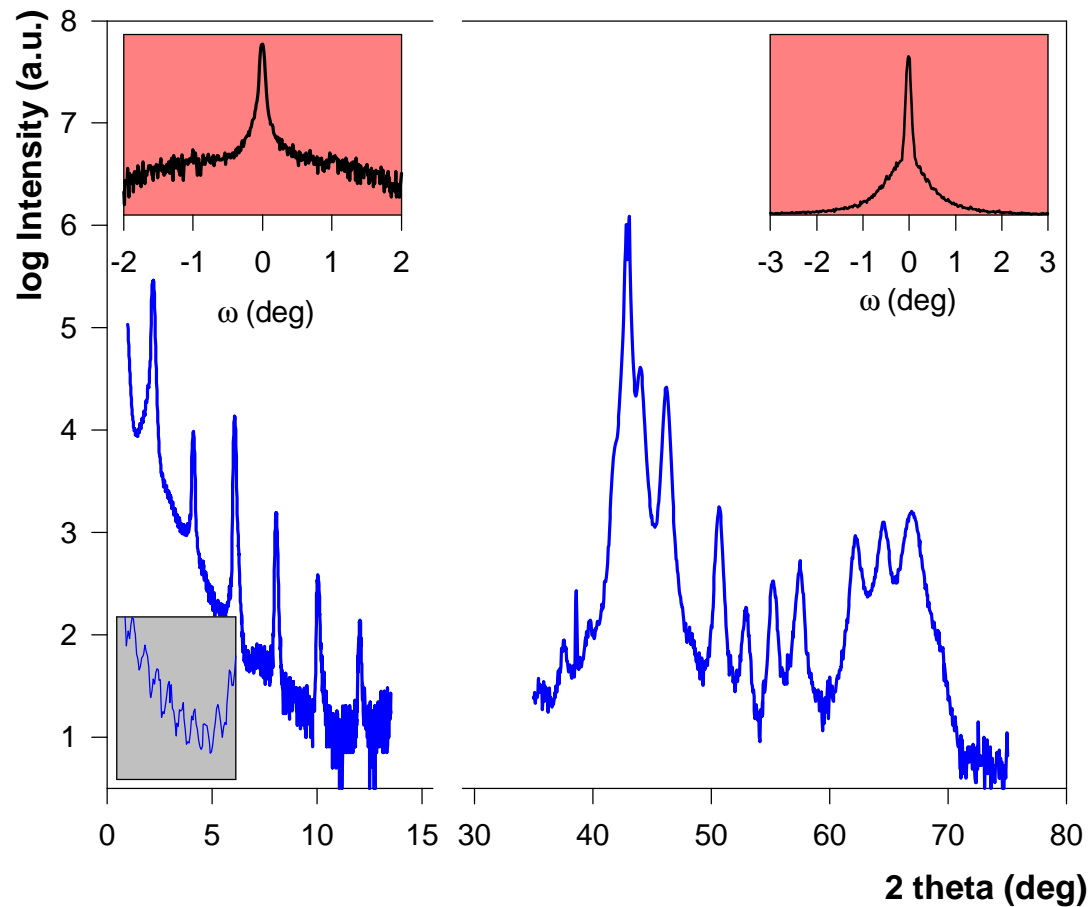


-

Epitaxial Fe/Cr superlattices on MgO(001) [Fe(4.8Å)/Cr(12.5Å)]₅₀ on MgO(001)

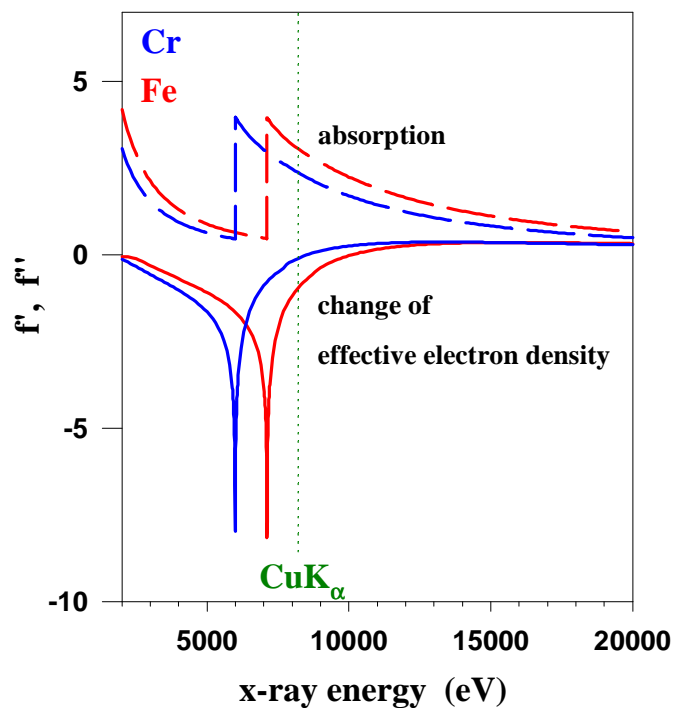


XRD - metallic multilayers
[Fe(18Å)/Ag(26Å)]₂₀ on MgO(001)

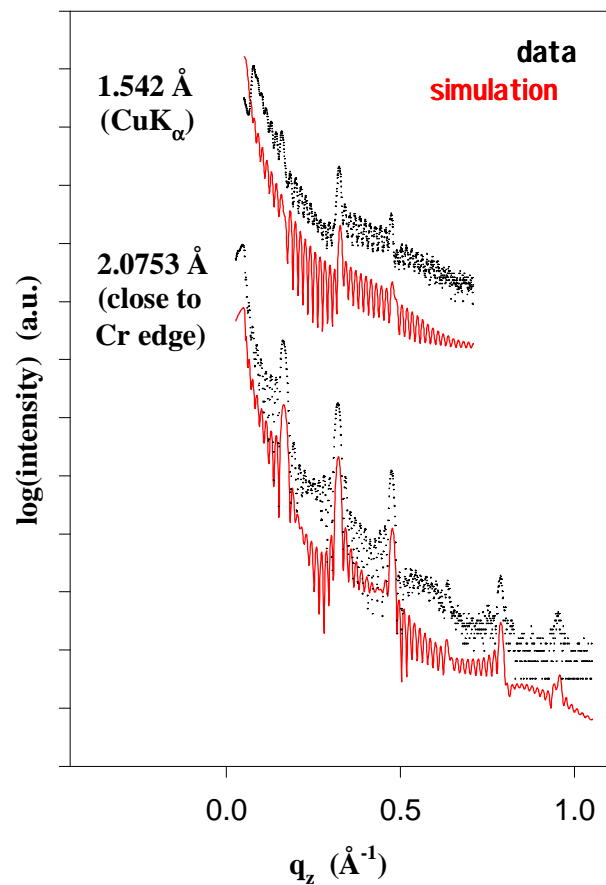


XRD - anomalous scattering

Fe/Cr

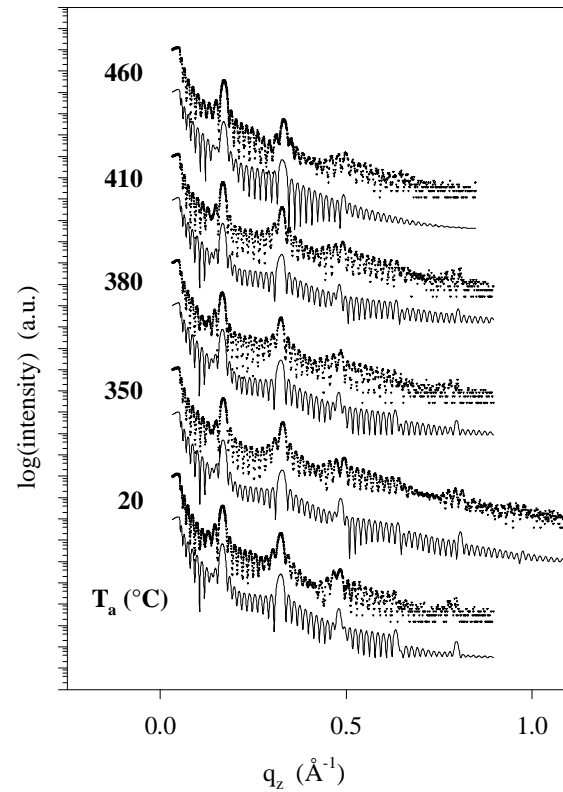


$[\text{Fe}(20\text{\AA})/\text{Cr}(12\text{\AA})]_{\times 10}$



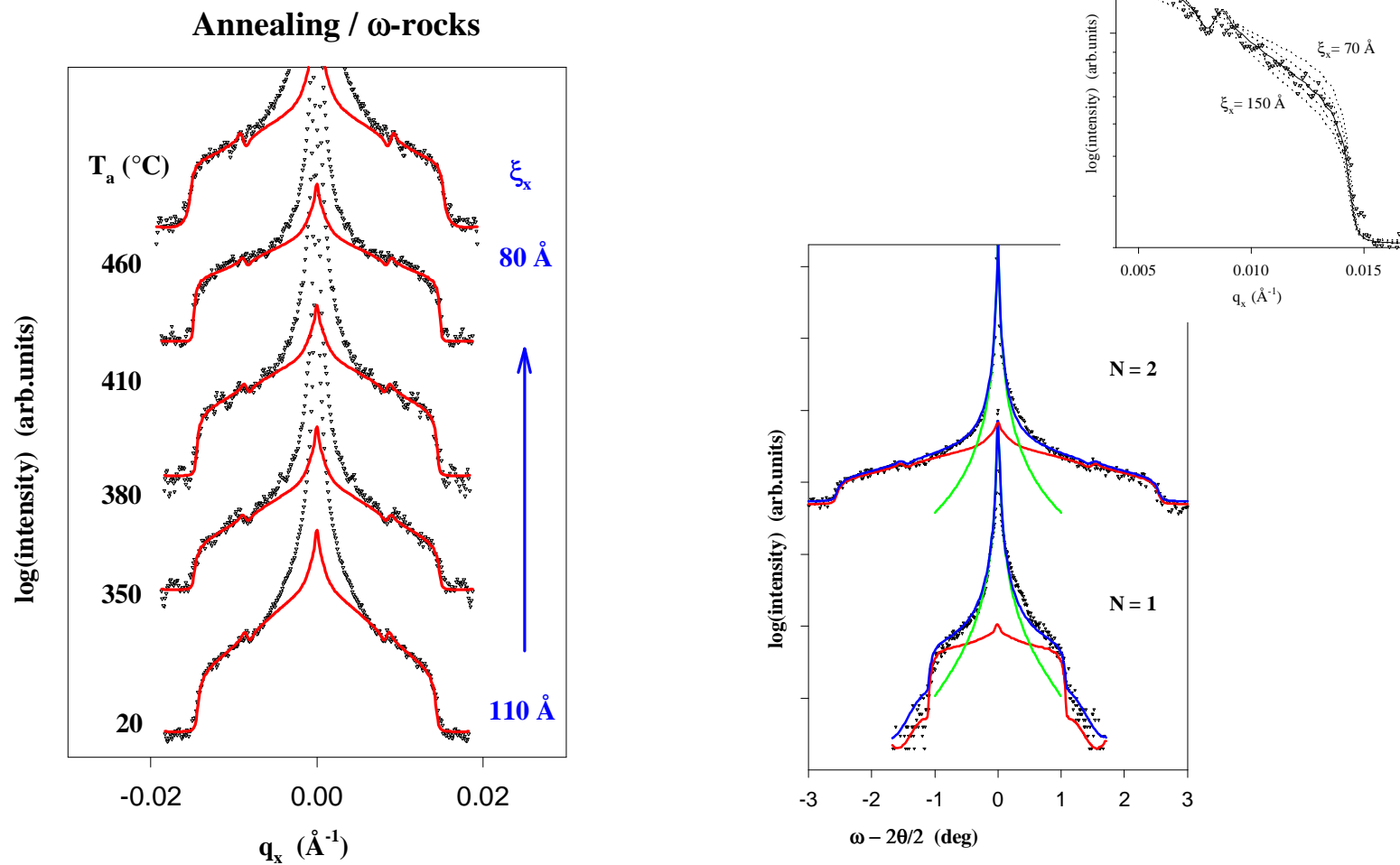
-

Epitaxial Fe/Cr superlattices on MgO(001) annealing



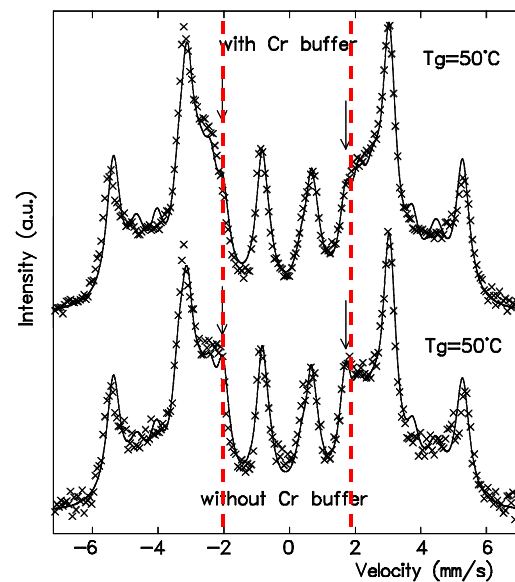
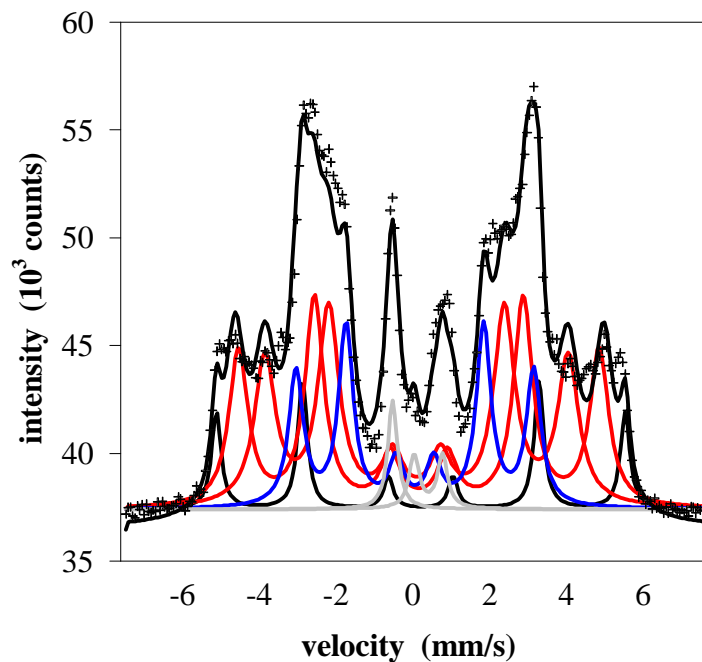
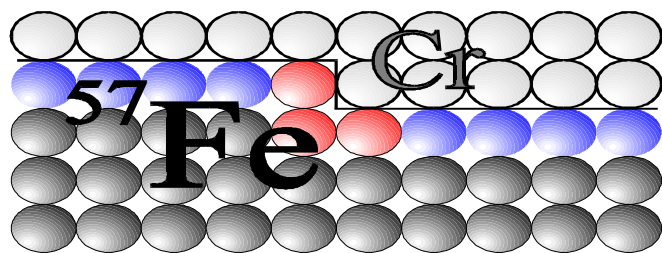
Phys. Rev. B 59, 1242 (1999)

Epitaxial Fe/Cr superlattices on MgO(001) annealing



Phys. Rev. B 59, 1242 (1999)

Epitaxial Fe/Cr superlattices on MgO(001) Cr buffer layer - Mößbauer Spectroscopy



Europys. Lett. 44, 379 (1998)